

ERP

MES
PRODUCTION

WMS
LOGISTICS

WEB
PORTAL

QUALITY
MANAGEMENT

BI
BUSINESS
INTELLIGENCE

APPS
MOBILE

FASTDEV
INFORMATION TECHNOLOGY

The solution for Fasteners
which focuses on the human's wit

Specialists and application solutions

FASTDEV is the italian company leader in IT solutions for Fasteners.

Our IT solutions, installed and active in Italy and in Europe, provide a **high quality standard** and allow to **optimize company processes** in terms of effectiveness and efficiency.

FASTDEV is present on **ORACLE "Solutions Catalog"** as the solution for Fasteners universe.



Our Strength? "Specificity"

We are a software company that develops specific applications for the mechanical industry, with high experience in Fasteners.

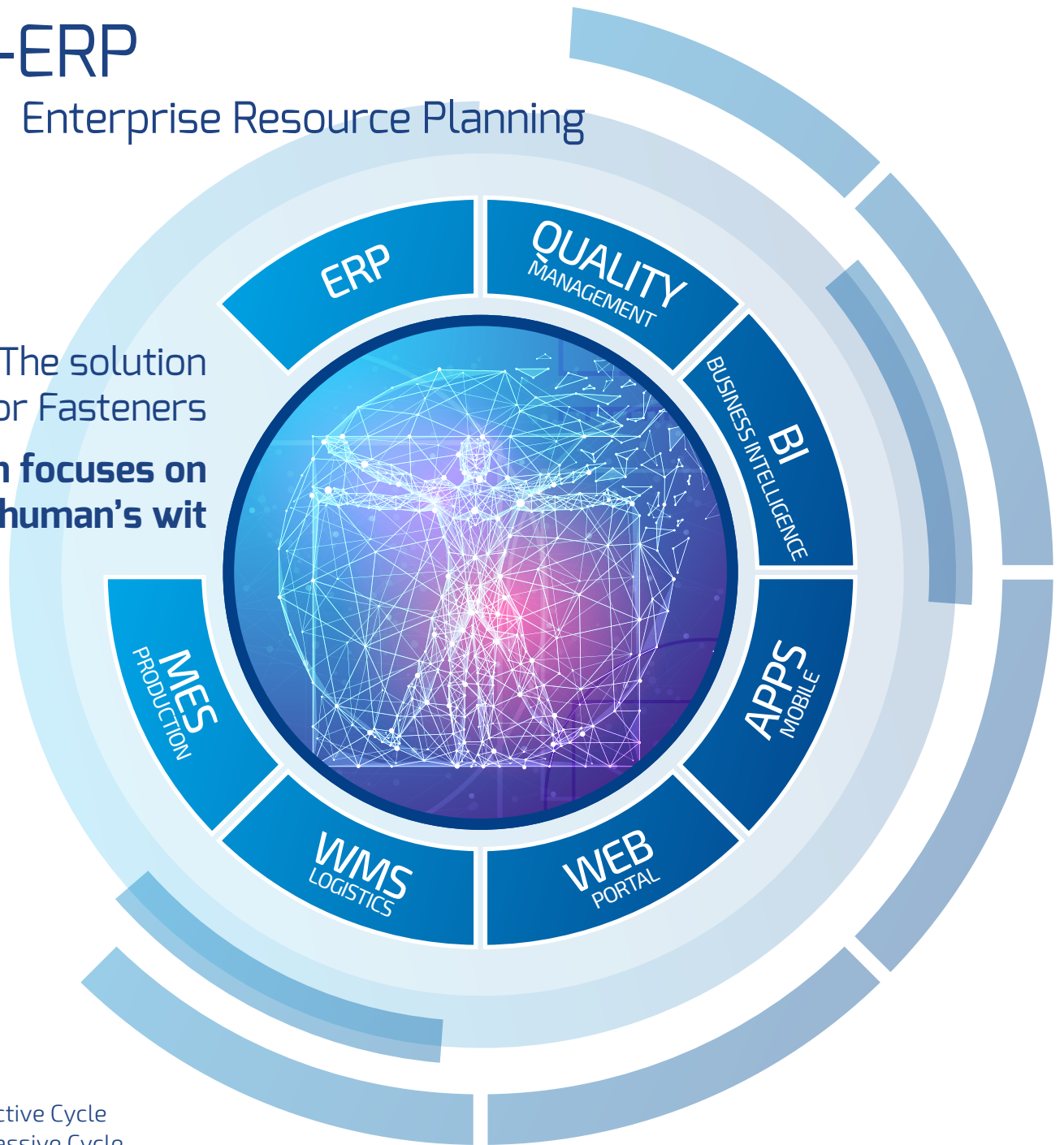
We have chosen to run across time with specific solutions that focus on the human's wit of companies.

Our apps simplify, plan, automate and control business management with particular regards to human's needs.

F-ERP

Enterprise Resource Planning

The solution
for Fasteners
which focuses on
the human's wit



- > Active Cycle
- > Passive Cycle
- > Quality
- > Logistics
- > Production
- > MRP: Manufacturing Resource Planning
- > Contract Work
- > Batches/ID numbers/country of origin traceability
- > Administration and Finance
- > Industrial Accounting
- > Estimated Costs
- > DMS (Document Management System)
- > Event Management
- > Web Portal
- > B2B
- > Apps
- > Business intelligence

F-CRM

Customer Relationship Management

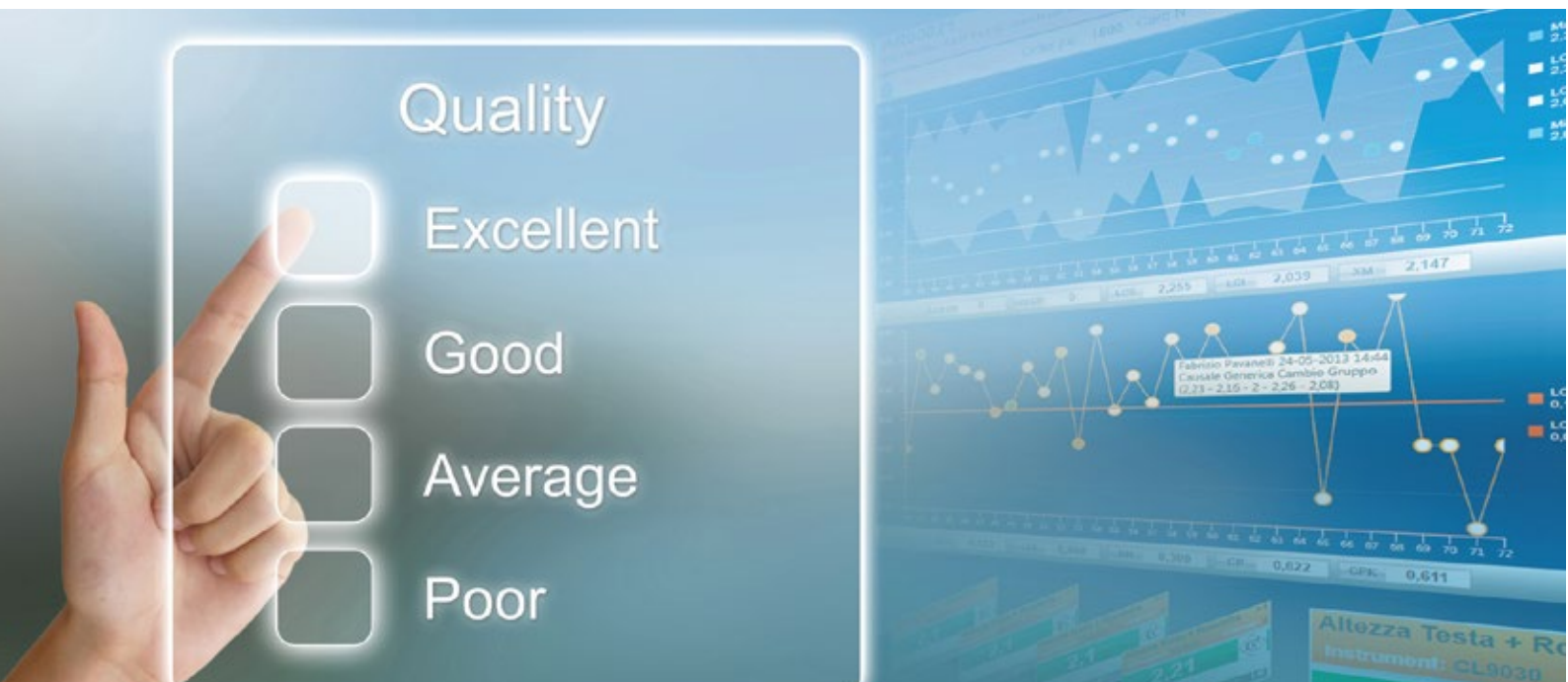
It allows to manage relations with customers, suppliers and contacts.

F-HR

Human Resources

F-Quality

System and Quality Control



Quality System

- > Document Management
- > Complaints Management
- > Non Conformity Management
- > 8D Report
- > Corrective and Preventive Actions
- > Audit
- > Vendor Rating
- > Certificates

Quality Control

- > Entrance Control
- > Advanced Product Quality Planning (APQP)
- > Control Plan
- > Production Part Approval Process (PPAP)
- > Measurement System Analysis (MSA)
- > Failure Mode and Effects Analysis (FMEA)
- > Statistical Process Control (SPC)

Indicators and KPI

Navigable Instrument panels, Alerts and Timetables

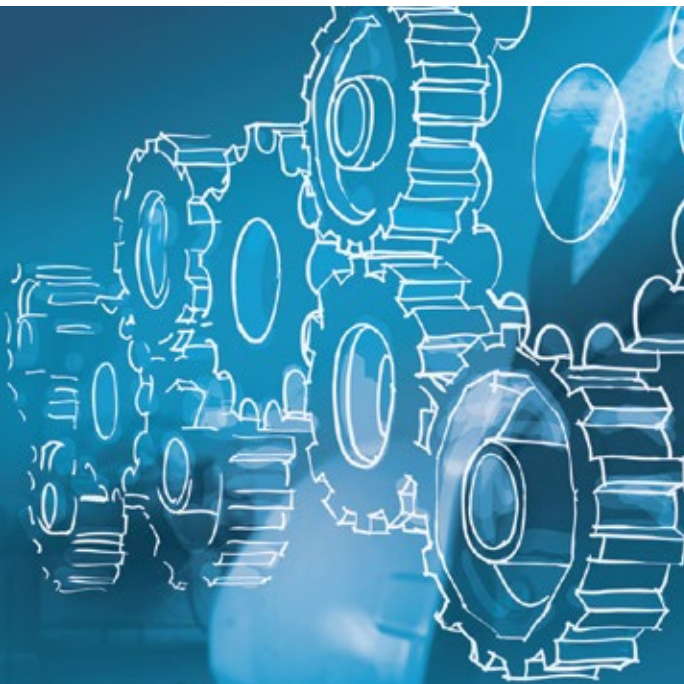
F-Quality

Allows to schedule, control, analyze and evaluates all the activities of quality system process management.

F-MES

Manufacturing Execution System

EasyProd®



INDUSTRY 4.0

Data collection and monitoring

- > **F-LINK** Connect and get data from machines
- > **F-TERM** Terminals beside machine
- > **F-GROUP** Control panel machine group
- > **F-LOG** Event maps departments/machines

Quality control process

- > **F-SPC** Automates all SPC processes, reducing time and costs of execution

Analysis of KPI factory

- > **F-VIEW** Control panel efficiency departments/machines
- > **F-MAPS** Monitoring control panel and efficiency control of production departments
- > **F-OEE** Effectiveness indicator of the structure through a sophisticated analysis system of availability, efficiency and quality

Batches/ID numbers traceability

Workflow production batches



F-MES

Collects production data through direct connection to the terminal of production survey.

The data processing allows to schedule orders and machine loads, follow the production cycle advancement and handle the requests of raw materials and equipment.

F-MANU

Maintenance Management Systems
Navigable Timetable Control Panel

F-WMS

Warehouse Management System

Allows to schedule, control, optimize and analyze the logistic activities of a company.



Logistics with Wi-Fi terminals

- > Missions Scheduling
- > Control Missions
- > Composition of Load Units
- > Load Missions
- > Packaging / Work Account Missions
- > Batch Picking / Order Picking Missions
- > Refilling Missions
- > Meeting Point Areas Management
- > Composition of Shipping Units
- > Packing List
- > Inventory
- > Integration with Automated Warehouse

F-KANBAN

Kanban supply mode

F-CSTOCK

Consignment stock supply mode

F-Portal

Web Portal

allows, through the web, to manage a "virtual" office constantly available for customers, suppliers and agents.

- > E-commerce: Offers/Orders
- > Tracking
- > Stock
- > Lists
- > DMS (Document Management System)



F-B2B

Business to Business

- > **F-B2B:** allows to send commercial documents in electronic format.
- > **EDI:** Integration with Electronic Data Interchange System.



F-APPS

Mobile Applications



F-BI

Business Intelligence

collects and processes company data allowing to analyze the performance, in order to guide the company decisional processes (management control).





Via Mascherpa, 14
20841 Carate Brianza (MB)
ITALIA
Ph. +39 0362 80721
info@fastdevsrl.com
fastdevsrl.com

